

- GENERAL NOTES
- A. UNLESS INDICATED OTHERWISE, ALL COUNTERTOPS:

 - 3'-0" AFF OR 3'-0" TO TOP OF RIM AT DROP-IN SINKS AND LAVATORIES WHERE OCCURS
 - 2'-6" DEEP
 - BLACK EPOXY RESIN, 1" THICK
 - BACKSPLASHES: 4" HIGH AT PERIMETER AND AS NOTED

B. UNLESS INDICATED OTHERWISE, ALL BASE CABINET(S):

 - 22" DEEP NOMINAL
 - TOE KICKS: 4" HIGH AND 3" DEEP

C. UNLESS INDICATED OTHERWISE, ALL WALL CABINET(S):

 - 1'-1" DEEP NOMINAL
 - 2'-6" HIGH
 - TOP AT 7'-0" AFF

D. PROVIDE SOLID BLOCKING FOR ALL WALL MOUNTED ITEMS

E. INSTALL RUBBER BASE ON THE BASE OF ALL CASEWORK

F. BUILT-IN EQUIPMENT: SIZE OPENING (HEIGHT, WIDTH AND DEPTH) AND ROUGH-IN REQUIREMENTS AS REQUIRED BASED ON APPROVED MANUFACTURER SUBMITTED.

G. ALL SHELVES: ADJUSTABLE UNLESS INDICATED OTHERWISE

H. PROVIDE FINISH END PANELS AT ALL EXPOSED CASEWORK ENDS.

I. LOCKS: AS INDICATED.

J. MOUNT ALL WHITE BOARDS AND CHALK BOARDS AT 4'-0" AFF, UNO

K. TALL STORAGE CABINETS SHALL BE SECURED TO THE WALL TO PREVENT TIPPING

L. ALL LAB EQUIPMENT IS OFCI

M. CM SHALL COORDINATE WITH OWNER FOR LOCATIONS OF OFCI PROJECTORS

N. REFER TO SINK SCHEDULE FOR IDENTIFICATION OF FIXTURES AND ACCESSORIES

- SCIENCE CASEWORK KEYNOTES
- REPRESENTED BY [n]

APPLIES TO DRAWINGS A7.4.1 - A7.4.n
- 1

RUBBER BASE
- 2

KNEE SPACE
- 3

BACK PANEL
- 4

END PANEL
- 5

SLIDING GLASS DOORS
- 6

FILLER PANEL
- 7

LOCK
- 8

FUME HOOD SHROUD, EXTEND TO CEILING
- 9

UMBILICAL; SEE DETAIL n/A7.4.X
- 10

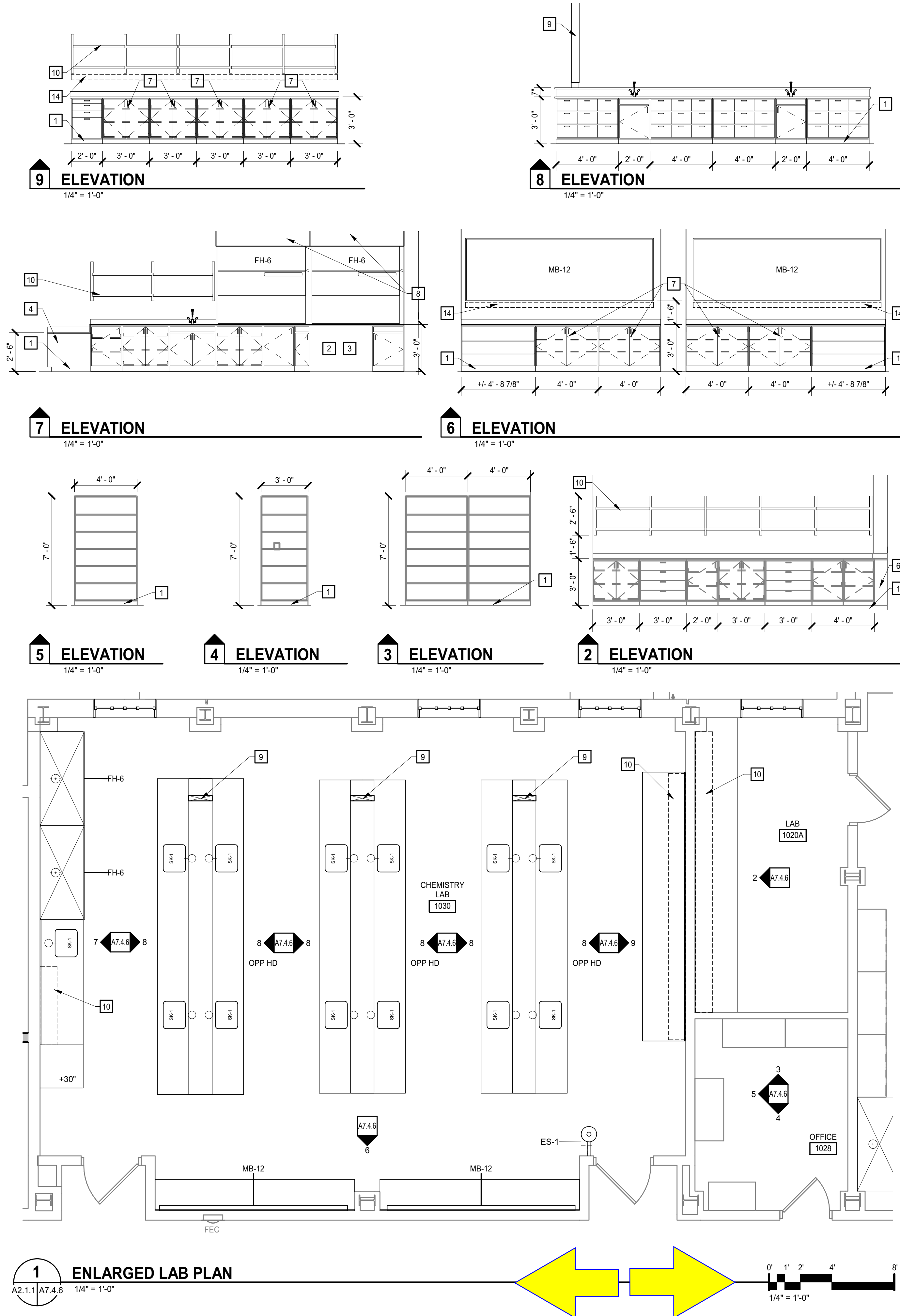
WALL SHELVING; SEE DETAIL n/A7.4.X
- 11

DRYING RACK; SEE DETAIL n/A7.4.X
- 12

ADJUSTABLE REAGENT SHELVING
- 13

REAGENT SHELVING; SEE DETAIL n/A7.4.X
- 14

ELECTRICAL RACEWAY



MOSELEYARCHITECTS

911 N. WEST STREET, SUITE 205 RALEIGH, NORTH CAROLINA 27603
PHONE (919) 843-0691
MOSELEYARCHITECTS.COM

PROGRESS
PRINT NOT FOR
CONSTRUCTION

PROFESSIONAL SEAL
STATE OF NORTH CAROLINA
ARCHITECT
52282
DAVID J. MOSELEY
NORTH CAROLINA
ARCHITECT

Dobo Hall Renovation - Package A

SCO PROJECT NO. 18-19798-01A
UNC Wilmington
4978 CAHILL DR, WILMINGTON, NC 28403

PROJECT NO. 580999
DATE: MARCH 27, 2019

REVISIONS

DATE DESCRIPTION

ENLARGED LAB
PLANS AND
ELEVATIONS

A7.4.6